

MOREVUE™ USER MANUAL

JUST ADD SOFTWARE, LLC

Acknowledgements

MoreVue™ was developed by Just Add Software, LLC in cooperation with Just Add Power. This licensed software is based on Just Add Software's intellectual property and/or copyrighted content. This software is intended solely for use with Just Add Power devices by Just Add Power customers or dealers who have purchased their Just Add Power HD over IP™ equipment through authorized support channels. Any unauthorized use is strictly prohibited and will be prosecuted by Just Add Software and/ or Just Add Power as violations of our copyrights and as theft of our confidential intellectual property.

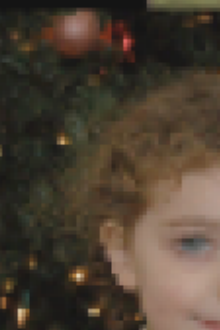
Use of this software constitutes acceptance of the accompanying license agreement. Please read the license agreement prior to using this software.

This document, the software package and all accompanying documents are Copyright © 2016

Just Add Software, LLC. All rights reserved. Any distribution or duplication of this user manual or the software without the express written consent of Just Add Software is prohibited.

All brand names used in this document are trademarks of their respective companies.

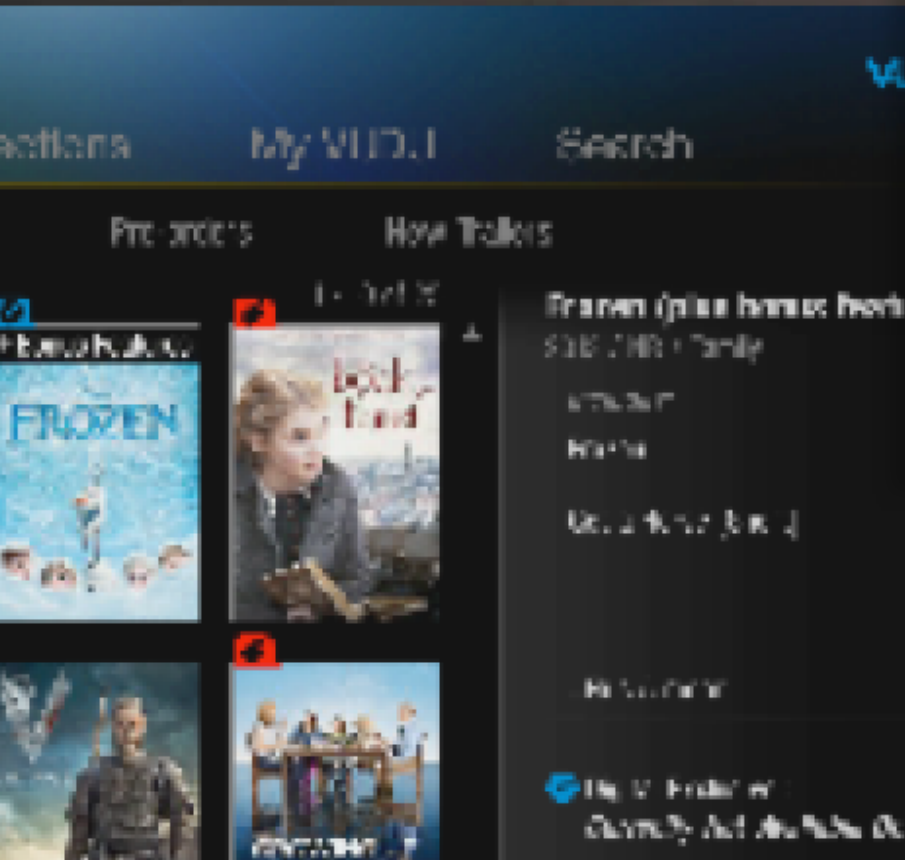
MoreVue was written in Xojo 2016. Just Add Software wishes to acknowledge use of code from the following individuals and companies: LogicalVue software for their UltraUpdater classes and controls. MonkeyBread software for several add-ins and modules used in this software package. And thanks to all of the members of the Xojo Network Users Group community for their day to day advice and support.



MOREVUE™

Just Add Software's MoreVue™ application allows for a quick and comprehensive overview of any device in a Just Add Power HD/IP™ video system.

This manual will detail application operation and features.





GETTING STARTED

MoreVue™ provides Just Add Power HD/IP system users running Layer 3 topologies the ability to receive on their computer live pre-views of any or all their devices. Nearly real time screen capture images are able to be displayed. This manual will detail the operation of MoreVue™ and its features.

Each new installation of MoreVue™ comes with a free 30 day trial of the software. After the 30 day period has completed, the software will require a license key that must be purchased. The license key is tied to each computer where the software is installed. To request a registration key, please open the registration window from the **edit** menu. The registration window is shown to the right. When a valid name and e-mail are entered, the “Send Registration Re-

Please enter your name, email address, and license code you received below from Just Add Software or an authorized dealer/distributor. Be sure to use the same name and e-mail address you used when registering.

To request a License Code, please enter your information and click "Send Registration Request." Your computer must be connected to the internet in order for Just Add Software to receive your request.

Your information will be sent to Just Add Software when registering.

Name:

Email Address:

Registration ID:

License Code:

Software is registered. Thank you!

quest button becomes active. Click on that button to send a request for a registration key to Just Add Software. Once purchase is verified, we will issue the license key. Please note that sometimes, the request may not go through due to internet or server issues. If you have not heard back from us in 24 hours, please contact support@justaddsoftware.net. Include the name, email address and the registration ID shown in the window and we will generate the code.

Once registered, all features of the program will be available.

SETUP

Number of Devices:

Number of Columns:

☐ Make All Devices Visible On Screen

☐ Leave Device Labels Visible

Text Color

Select Network Adapter:

Device Name

IP Address

Load JADConfig File

Change Profile

Cancel

OK

On initial startup, users will be presented with a notification that they are operating a trial version of the software. After that notice is dismissed, the user will be notified that the settings file was not found. When that notice is dismissed, the settings window will open as shown above. If manual setup is desired, enter the number of devices to be monitored in the space shown. The window will expand with new device name and IP address fields for each device. See the image to the left.

Next, the choice can be made to have a specific number of columns on the screen or to make all devices visible in the available screen space. For example, if the system being monitored has 30 devices, a choice of 3 columns could be made. This would result in larger images, but some images will be off screen will need to be scrolled on screen to view. Alternatively, if “Make All Devices Visible on Screen” is checked, MoreVue™ optimizes image size to fit every device on the screen so all are viewed at once. This can result in smaller image size, but every device is viewable without having to scroll.

Next select the network interface card to be used when connecting to the devices.

In addition, choices can be made to leave the device labels on the screen at all times, and the color of the text for the labels can be set.

Number of Devices: 13Number of Columns: 4

☒ Make All Devices Visible On Screen

☒ Leave Device Labels Visible

Text Color

Select Network Adapter: en0 - Wi-Fi - 172.20.10.2

Device Name

IP Address

TivoHD

10.0.11.100

TivoPremier

10.0.15.100

TivoLivingRoom

10.0.18.100

Vudu

10.0.13.100

AppleTV2

10.0.12.100

MacMini

10.0.17.100

Roku

10.0.14.100

Family Room

10.0.10.101

Living Room

10.0.10.102

Office

10.0.10.103

Bedroom

10.0.10.104

Utility Room

10.0.10.105

+4+ TX

10.0.19.100

Load JADConfig File

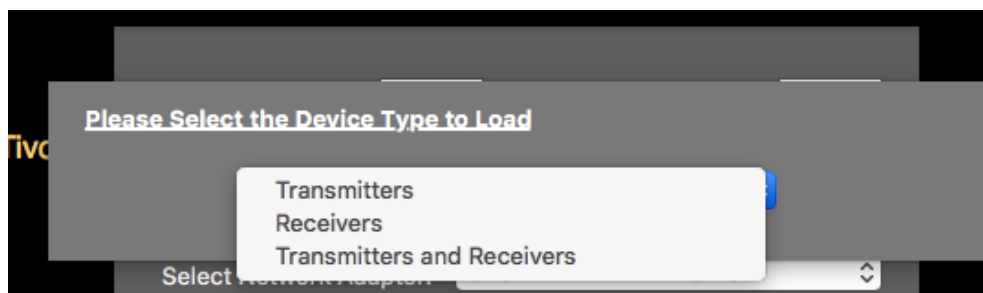
Change Profile

Cancel

OK

Finally, enter a name for each device and the IP address for each device.

To make things easier for configuration, MoreVue has the ability to read the report files generated by Just Add Power's JADConfig software. To load a JADConfig file, click the Load JADConfig File button in the lower left of the setup window. You will be presented with the option to load transmitters, load receivers or load both:



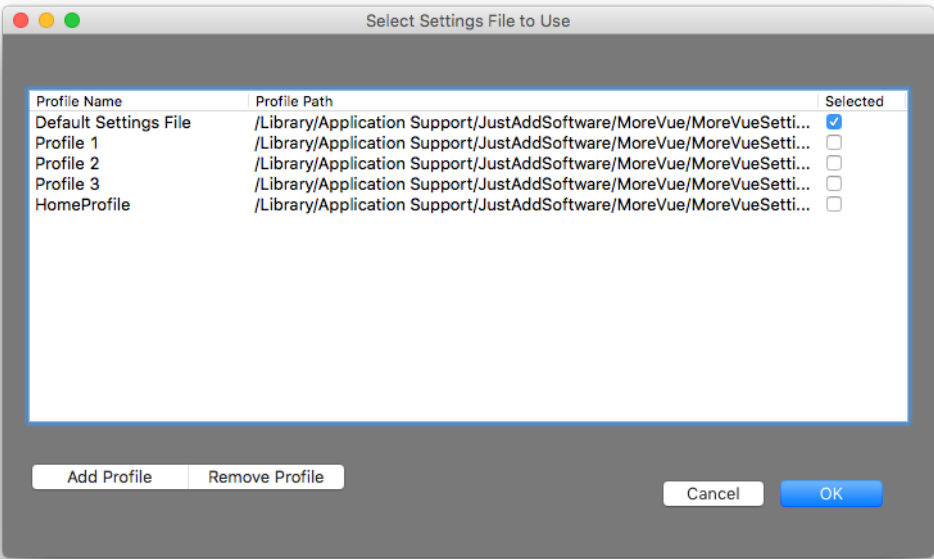
Choose the type of devices to be loaded from the file and the list of devices and IP addresses will be automatically populated. It may be desired to rename the devices once they are loaded as they will be named "Transmitter 1, Transmitter 2, ..., Receiver 1, Receiver 2, etc.

Click OK to save your changes and begin streaming images.

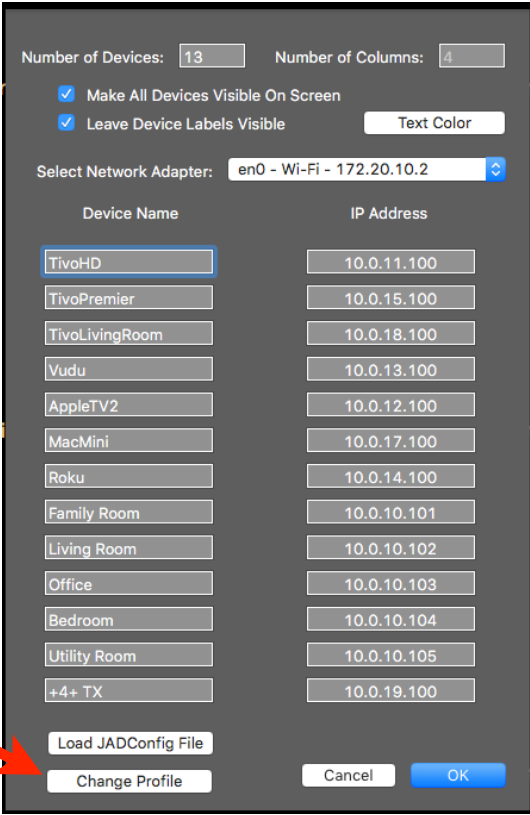
PROFILES

MoreVue allows a user to have an unlimited number of profiles. Each profile is a different set of settings. So there could be a profile for just TVs, a profile for just sources, a profile for just specific TVs, etc. To change or create a new profile, click the change profile button in the setup window.

The window below will now be shown:

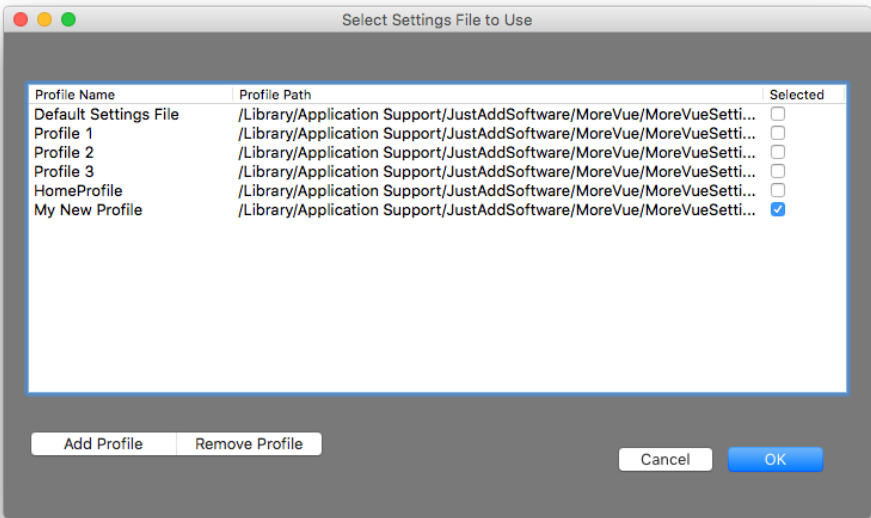
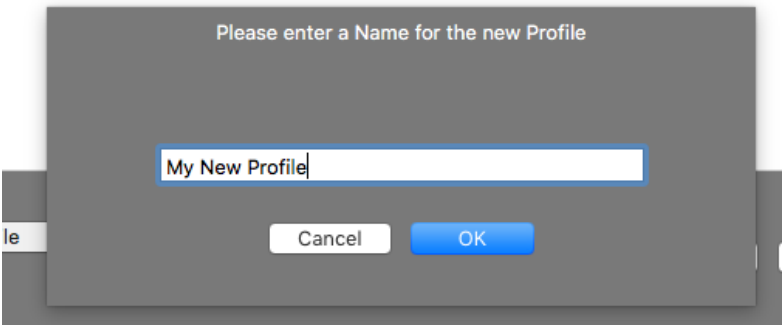


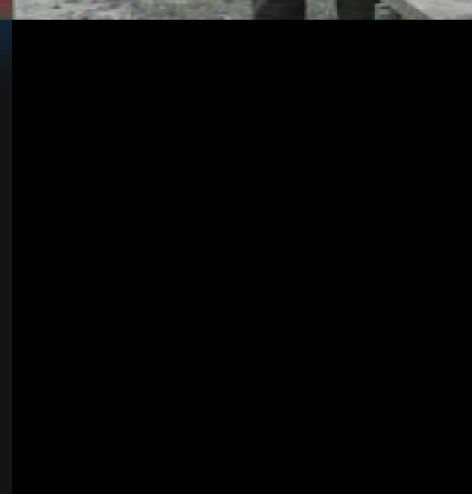
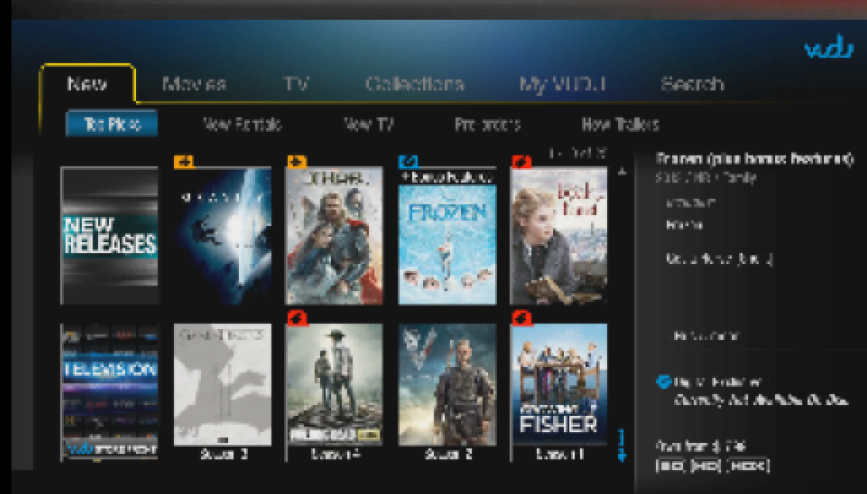
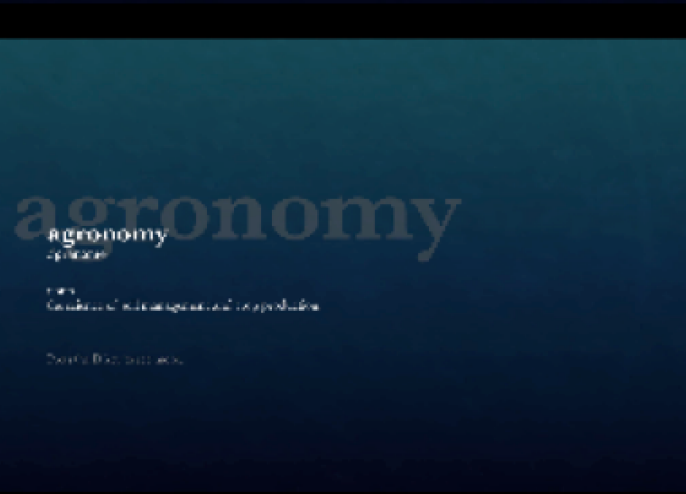
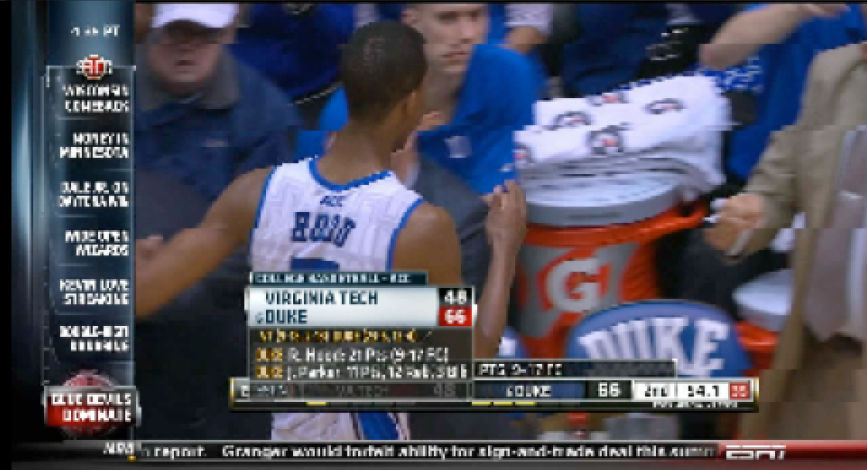
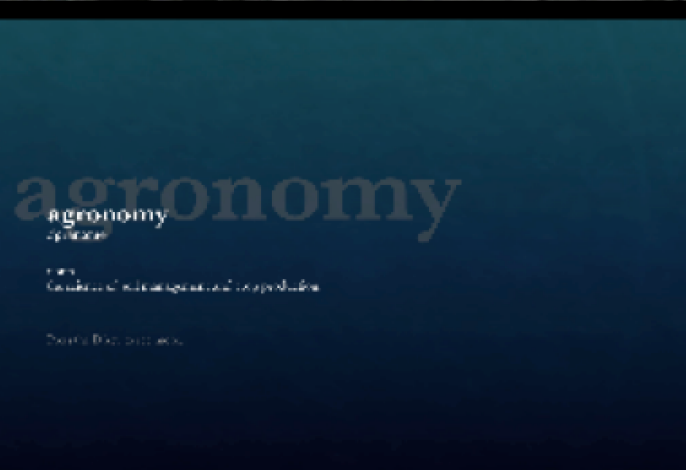
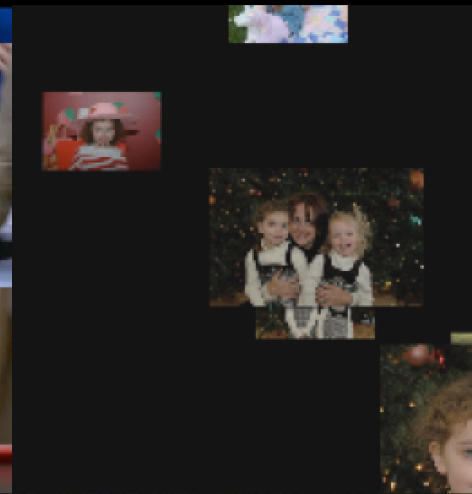
document will be created and shown in the list of available profiles. It will be selected. Click OK and the profile window will close and a new blank settings window will be shown. Now enter new settings manually or load them from a JADConfig report file as described earlier.. To switch between profiles, simply select the desired profile from the list of profiles available and those settings will be loaded. MoreVue will always start up on the profile that has been selected in the profiles window.



The *Default Settings File* is the profile that is created when the application is first started and set up. The selected profile is the one shown with the selected check box marked.

To create a new profile, click the “Add Profile” button. You will be presented with the dialog below asking for the name of the profile. Enter the desired name and click OK. A new blank profile





STREAMING

Once settings are saved, connection will be attempted to each of the devices. Once connected to the device, streaming will begin. MoreVue™ attempts to get images from the Just Add Power hardware as quickly as possible. The speed at which images are transferred depends on the resolution of the image captures, the number of devices and the speed of the network connection. With lower resolution settings and a good network, MoreVue™ is able to stream at near full frame rates.

Resizing the Window:

MoreVue™ will open to the maximum available width of the screen being used and up to the maximum available height of the screen. If the window is resized smaller, all displayed screens and images are scaled as well. So it is possible to shrink the MoreVue™ window to a small size with small images. This can be useful when wanting to simply have a quick preview of what is being shown on each device without having to have the entire computer screen taken up by the application.

Setting Resolution:

Resolution can be adjusted on an image by image basis. The default capture resolution is 320 horizontal pixels. This value is high enough that the images are of sufficient quality and yet the transfer speed is fast enough to achieve a good viewing experience. Understand that as significant numbers of pixels are missing, the image will be blocky, particularly with text. If higher quality images are needed, select a higher resolution.

When connecting to the Just Add Power hardware, MoreVue™ attempts to determine the video resolution of the HDMI stream. If the resolution cannot be determined, MoreVue™ assumes the HDMI signal is 1080p. The table below shows the available selections for 1080p and

720p signals. User selectable horizontal resolutions are based on the detected resolution and are at full, 1/2, 1/4, 1/6 and 1/8 resolutions.

To change the resolution for an image, move the cursor to that image. As the cursor moves through the image, an overlay window activates showing the available resolution. The name of the device is also shown in the upper left corner of the image. The current resolution selected is indicated by the selection dot next to it being solid. To change resolution, click on the dot or the text of the new resolution. The stream will then change. Resolutions changes can be easily seen as the quality and frame rate of the image will change.



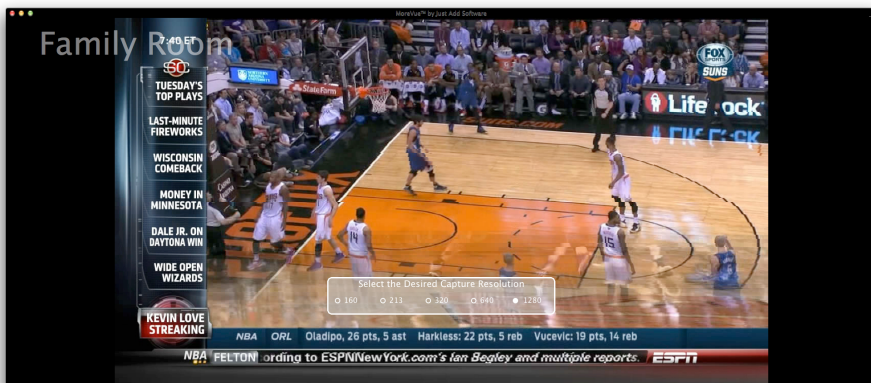
After moving into an image, if no cursor movement is made for a few seconds, the overlay fades. To activate it, move the cursor again.

Please note that at high resolutions, the frame rate may be very slow and may even appear to freeze at times. This is because the amount of data being transferred is significant as the Just Add Power hardware is not performing any image compression prior to transferring the bitmap of the HDMI stream to MoreVue. Additionally, some images from fast motion content like sports, may have tears in the image. This is because the image has changed during the period of when the bitmap was captured.

Resolution	1080p	720p
Full	1920	1280
1/2	960	640
1/4	480	320
1/6	320	213
1/8	240	160

Image Zoom:

Sometimes, it is desired to just view a single device in larger size. If this is the case, click the image in an area outside the overlay. The image will then expand to fill all available space in the window while keeping the aspect ratio correct. To return to viewing all images, press the escape key.



Full Quality Capture:

If it is desired to save a full quality image of a particular screen to disc, right click on the image to be captured. A menu will pop up. Select “Grab High Quality Full Resolution Image.” The current stream will stop and a full resolution image capture will take place. Once the image is transferred to the computer, a dialog box will open requesting where to save the image and the format for saving. Valid save formats are JPEG or PNG.

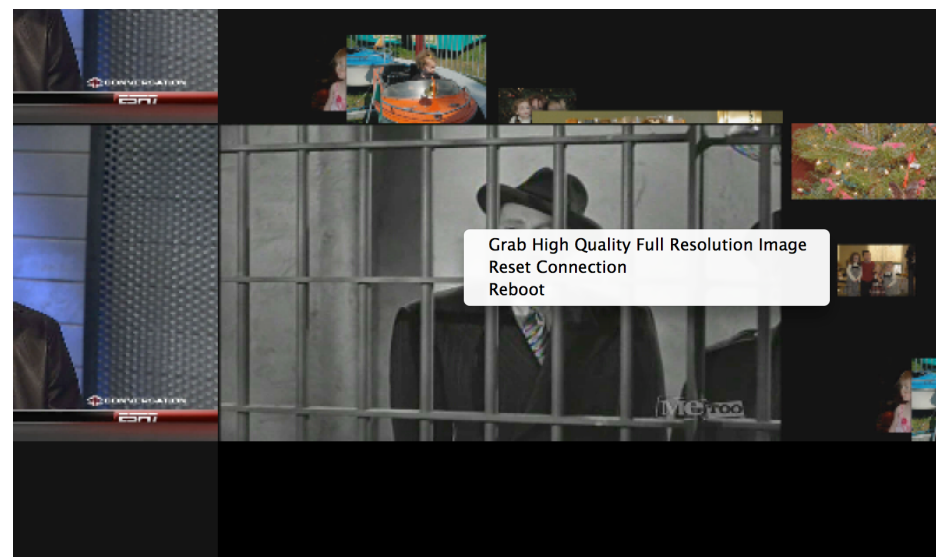
Resetting Connections:

Sometimes a connection to the Just Add Power hardware gets interrupted or stalled. MoreVue™ can detect this situation and will make an attempt to restart its connection to the device. If a manual connection reset is desired, right click in the image of the desired device and choose “Reset Connection.” MoreVue™ will then break the

network connection with the hardware and attempt to re-establish it and begin the stream again.

Rebooting Devices:

If a device becomes completely unresponsive after attempts at resetting the connection, it may need to be rebooted. To reboot a device, right click in the image for the device and select “reboot.” The device will reboot. When it comes back online MoreVue™ will attempt to re-connect and when connected, streaming of the images



will begin again automatically.



IMAGE SERVER

MoreVue™ features a built in html server for each device that will deliver the received image for that device to any browser or web page. To access the web server for a device enter the IP address of the computer running more view with a port designation of 8000 plus the device number. So for example, if the computer running MoreVue™ is at IP 192.168.1.2 and we want to view the image on device 1, the IP is:

<http://192.168.1.2:8001>

Similarly if the device desired to view is device 13, the URI would be:

<http://192.168.1.2:8013>

Using this feature allows other control systems or software to access the screen captures in a very quick and rapid way as images are compressed and sent at the selected resolution.

DATA FILE FORMAT

The data file MoreVue™ uses to save settings is a comma delimited text file. It is possible to enter the settings for the application in an external text or spreadsheet application. This may be easier to use for entry for large numbers of devices. The format of the file is as follows:

NIC,*Index_Number_of_Network_Adapter*
Number of Devices, *Number_of_Devices*
Number of Columns, *Number_of_Columns*
All On Screen, *True_or_False*
Device_1_Name,Device_1_IP_Address
Deivce_2_Name,Device_2_IP_Address
...
Device_N_Name,Device_N_IP_address

The default Network Adapter index is 0. If this value is unknown (likely), then enter 0 and it can be edited later in MoreVue. An actual data file is shown below:

NIC,0
Number of Devices,10
Number of Columns,4
All On Screen,True
TivoHD,10.0.11.100
TlvoPremier,10.0.15.100
AppleTV2,10.0.16.100
Roku,10.0.14.100
MacMini,10.0.17.100
Family Room,10.0.10.101
Living Room,10.0.10.102
Office,10.0.10.103
Bedroom,10.0.10.104
Utility Room,10.0.10.105

LICENSE

JUST ADD SOFTWARE, LLC.

SOFTWARE LICENSE AGREEMENT FOR MORE-VUE™

PLEASE READ THIS SOFTWARE LICENSE AGREEMENT ("LICENSE") CAREFULLY BEFORE USING MOREVUE™. BY USING THE JUST ADD SOFTWARE PRODUCT, YOU ARE AGREEING TO BE BOUND BY THE TERMS OF THIS LICENSE. IF YOU DO NOT AGREE TO THE TERMS OF THIS LICENSE, DO NOT USE THE SOFTWARE. IF YOU DO NOT AGREE TO THE TERMS OF THE LICENSE, YOU MAY RETURN THE JUST ADD SOFTWARE PRODUCT TO THE PLACE WHERE YOU OBTAINED IT FOR A REFUND.

1. General. The Just Add Software product (hereafter referred to as "MoreVue™") and any third party software, documentation and any other files accompanying this License whether on disk, in read only memory, on any other media or in any other form (collectively the "Just Add Software product") are licensed, not sold, to you by Just Add Software LLC. ("Just Add Software") for use only under the terms of this License, and Just Add Software reserves all rights not expressly granted to you. The terms of this License will govern any software upgrades provided by

Just Add Software that replace and/or supplement the original Just Add Software product, unless such upgrade is accompanied by a separate license in which case the terms of that license will govern. Just Add Software retains all ownership of the software, the source code and the user interface.

Title and intellectual property rights in and to any content displayed by or accessed through MoreVue™ belongs to the respective content owner. Such content may be protected by copyright or other intellectual property laws and treaties, and may be subject to terms of use of the third party providing such content. This License does not grant you any rights to use such content.

2. Permitted License Uses and Restrictions.

A. Subject to the terms and conditions of this License, you are granted a limited non-exclusive license to install and use MoreVue™. You may not make the MoreVue™ available over a network where it could be used by multiple computers at the same time. You may make one copy of MoreVue™ in machine-readable form for backup purposes only; provided that the backup copy must include all copyright or other proprietary notices contained on the original.

B. You may not and you agree not to, or to enable others to, copy (except as expressly permitted by this License), decompile, reverse engineer, disassemble, attempt to derive the source code of, decrypt, modify, create derivative works of MoreVue™, or any part thereof (except as and only to the extent any foregoing restriction is prohibited by applicable law). Any attempt to do so is a violation of the rights of Just Add Software and its licensors of MoreVue™.

C. MoreVue™ was developed in cooperation with Just Add Power solely for use with Just Add Power's HDMI over IP product line by Just Add Power customers or dealers who have purchased their Just Add Power HDMI over IP equipment through authorized support channels. Any unauthorized use is prohibited and considered a breach of this license and theft of Just Add Power's and Just Add Software's intellectual property and violation of Just Add Power's and Just Add Software's copyrights.

3. Transfer. You may not rent, lease, lend, redistribute or sublicense MoreVue™. You may, however, make a one-time permanent transfer of all of your license rights to MoreVue™ to another party, provided that: (a) the transfer must include all of the MoreVue™ Software, including all its component parts, original media, printed materials and this License; (b) you do not retain any copies of MoreVue™, full or partial, including copies stored on a computer or other storage device; and (c) the party receiving the MoreVue™ Software reads and agrees to accept the terms and conditions of this License.

4. Consent to Use of Data. You agree that Just Add Software and its subsidiaries may collect and use technical and related information, including but not limited to technical information about your computer, system and application software, and peripherals, that is gathered periodically to facilitate the provision of software updates, product support and other services to you (if any) related to MoreVue™ and to verify compliance with the terms of this License.→†

5. Termination. This License is effective until terminated. Your rights under this License will terminate automatically without notice from Just Add Software if you fail to comply with any term(s) of this License. Upon the termination of this License, you shall cease all use of the MoreVue™ Software and destroy all copies, full or partial, of the MoreVue™ Software.

6. Disclaimer of Warranties. YOU EXPRESSLY ACKNOWLEDGE AND AGREE THAT USE OF MOREVUE™ (AS DEFINED ABOVE) IS AT YOUR SOLE RISK AND THAT THE ENTIRE RISK AS TO SATISFACTORY QUALITY, PERFORMANCE, ACCURACY AND EFFORT IS WITH YOU. MOREVUE™ IS PROVIDED "AS IS", WITH ALL FAULTS AND WITHOUT WARRANTY OF ANY KIND, AND JUST ADD SOFTWARE AND JUST ADD SOFTWARE'S LICENSORS (COLLECTIVELY REFERRED TO AS "JUST ADD SOFTWARE" FOR THE PURPOSES OF SECTIONS 6 AND 7) HEREBY DISCLAIM ALL WARRANTIES AND CONDITIONS WITH RESPECT TO MOREVUE™, EITHER EXPRESS, IMPLIED OR STATUTORY, IN-

CLUDING, BUT NOT LIMITED TO, THE IMPLIED WARRANTIES AND/OR CONDITIONS OF MERCHANTABILITY, OF SATISFACTORY QUALITY, OF FITNESS FOR A PARTICULAR PURPOSE, OF ACCURACY, OF QUIET ENJOYMENT, AND NON-INFRINGEMENT OF THIRD PARTY RIGHTS. JUST ADD SOFTWARE DOES NOT WARRANT AGAINST INTERFERENCE WITH YOUR ENJOYMENT OF MOREVUE™, THAT THE FUNCTIONS CONTAINED IN MOREVUE™ WILL MEET YOUR REQUIREMENTS, THAT THE OPERATION OF MOREVUE™ WILL BE UNINTERRUPTED OR ERROR-FREE, OR THAT DEFECTS IN MOREVUE™ WILL BE CORRECTED. YOU FURTHER ACKNOWLEDGE THAT MOREVUE™ IS NOT INTENDED OR SUITABLE FOR USE IN SITUATIONS OR ENVIRONMENTS WHERE THE FAILURE OF, OR ERRORS OR INACCURACIES IN THE CONTENT, DATA OR INFORMATION PROVIDED BY MOREVUE™ COULD LEAD TO DEATH, PERSONAL INJURY, OR SEVERE PHYSICAL OR ENVIRONMENTAL DAMAGE, INCLUDING WITHOUT LIMITATION THE OPERATION OF NUCLEAR FACILITIES, AIRCRAFT NAVIGATION OR COMMUNICATION SYSTEMS, AIR TRAFFIC CONTROL, LIFE SUPPORT OR WEAPONS SYSTEMS. NO ORAL OR WRITTEN INFORMATION OR ADVICE GIVEN BY JUST ADD SOFTWARE OR A JUST ADD SOFTWARE AUTHORIZED REPRESENTATIVE SHALL CREATE A WARRANTY. SHOULD MOREVUE™ PROVE DEFECTIVE, YOU ASSUME THE ENTIRE COST OF ALL NECESSARY SERVICING, REPAIR OR CORRECTION. SOME JURISDICTIONS DO NOT ALLOW THE EXCLUSION OF IMPLIED WARRANTIES OR LIMITATIONS ON APPLICABLE STATUTORY RIGHTS OF A CONSUMER, SO THE ABOVE EXCLUSION AND LIMITATIONS MAY NOT APPLY TO YOU.

7. Limitation of Liability. TO THE EXTENT NOT PROHIBITED BY LAW, IN NO EVENT SHALL JUST ADD SOFTWARE BE LIABLE FOR PERSONAL INJURY, OR ANY INCIDENTAL, SPECIAL, INDIRECT OR CONSEQUENTIAL DAMAGES WHATSOEVER, INCLUDING, WITHOUT LIMITATION, DAMAGES FOR LOSS OF PROFITS, LOSS OF DATA, BUSINESS INTERRUPTION OR ANY OTHER COMMERCIAL DAMAGES OR LOSSES, ARISING OUT OF OR RELATED TO YOUR USE OR INABILITY TO USE MoreVue™, HOWEVER CAUSED, REGARDLESS OF THE THEORY OF LIABILITY (CONTRACT, TORT OR OTHERWISE) AND EVEN IF JUST ADD SOFTWARE HAS BEEN ADVISED OF THE POSSIBILITY OF SUCH DAMAGES. SOME JURISDICTIONS DO NOT ALLOW THE LIMITATION OF LIABILITY FOR PERSONAL INJURY, OR OF INCIDENTAL OR CONSEQUENTIAL DAMAGES, SO THIS LIMITATION MAY NOT APPLY TO YOU. In no event shall Just Add Software's total liability to you for all damages (other than as may be required by applicable law in cases involving personal injury) exceed the amount of fifty dollars (\$50.00). The foregoing limitations will apply even if the above stated remedy fails of its essential purpose.

8. Export Control. You may not use or otherwise export or reexport MoreVue™ except as authorized by United States law and the laws of the jurisdiction in which MoreVue™ was obtained. In particular, but without limitation, MoreVue™ may not be exported or re-exported (a) into any U.S. embargoed countries or (b) to anyone on the U.S. Treasury Department's list of Specially Designated Nationals or the U.S. Department of Commerce Denied Person, Ås List or Entity List. By

using MoreVue™, you represent and warrant that you are not located in any such country or on any such list. You also agree that you will not use these products for any purposes prohibited by United States law, including, without limitation, the development, design, manufacture or production of missiles, or nuclear, chemical or biological weapons.

9. Government End Users. MoreVue™ and related documentation are "Commercial Items", as that term is defined at 48 C.F.R. –β2.101, consisting of "Commercial Computer Software" and "Commercial Computer Software Documentation", as such terms are used in 48 C.F.R. –β12.212 or 48 C.F.R. –β227.7202, as applicable. Consistent with 48 C.F.R. –β12.212 or 48 C.F.R. –β227.7202-1 through 227.7202-4, as applicable, the Commercial Computer Software and Commercial Computer Software Documentation are being licensed to U.S. Government end users (a) only as Commercial Items and (b) with only those rights as are granted to all other end users pursuant to the terms and conditions herein. Unpublished-rights reserved under the copyright laws of the United States.

10. Controlling Law and Severability. This License will be governed by and construed in accordance with the laws of the State of Delaware, as applied to agreements entered into and to be performed entirely within Delaware between Delaware residents. This License shall not be governed by the United Nations Convention on Contracts for the International Sale of Goods, the application of which is expressly excluded. If for any reason a court of competent jurisdiction

finds any provision, or portion thereof, to be unenforceable, the remainder of this License shall continue in full force and effect.

11. Complete Agreement; Governing Language. This License constitutes the entire agreement between the parties with respect to the use of MoreVue™ licensed hereunder and supersedes all prior or contemporaneous understandings regarding such subject matter. No amendment to or modification of this License will be binding unless in writing and signed by Just Add Software. Any translation of this License is done for local requirements and in the event of a dispute between the English and any non-English versions, the English version of this License shall govern.